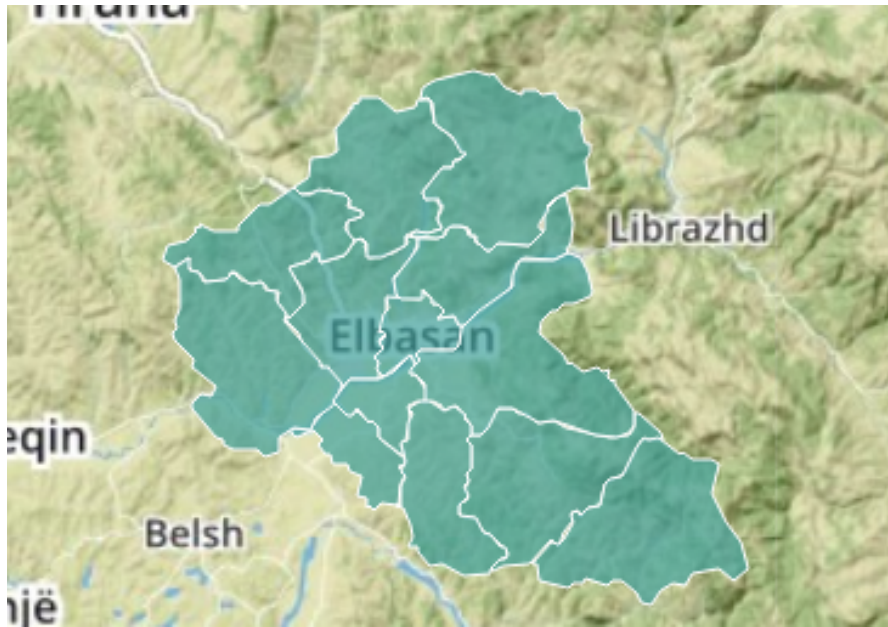


Votat për subjektet në Këshillin e Bashkisë Elbasan

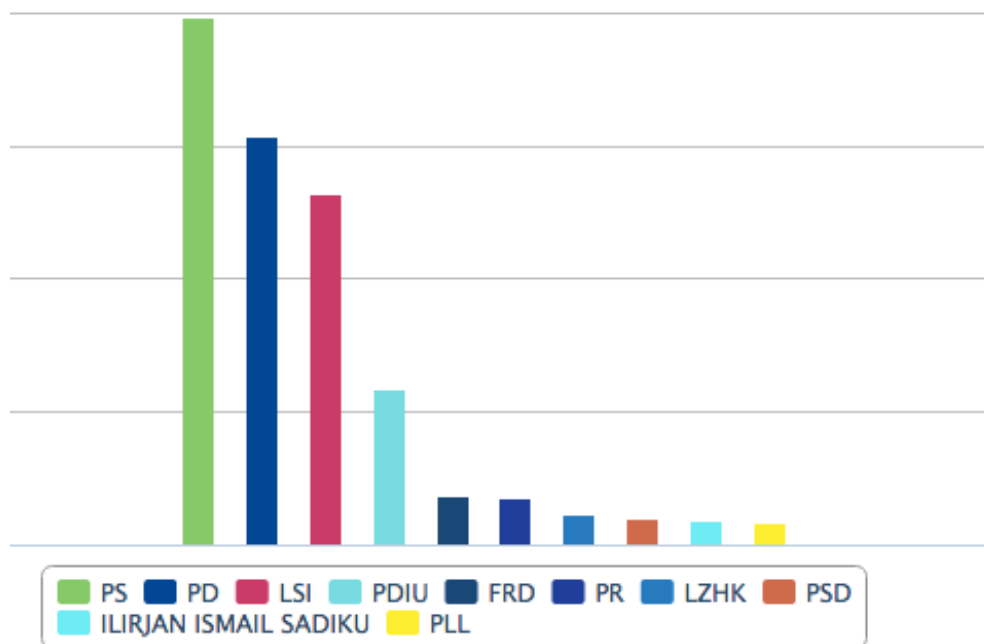


Votuar 74.825 | 47,21% Pjesëmarrja

	Subjekti	Vota	Përqindje	Mandate
3.	PSD	1.032	1,41%	0
6.	PBDNJ	134	0,18%	0
	APPD	22.275	30.49%	16
7.	PDM-E RE	290	0,40%	0
8.	LZHK	1.172	1,60%	1
10.	PBKD	578	0,79%	0
12.	PLL	887	1,21%	1
13.	PR	1.802	2,47%	1
15.	PD	15.365	21,03%	13
16.	PBK	330	0,45%	0
17.	KONS	260	0,36%	0
18.	BLD	462	0,63%	0
19.	PBD	606	0,83%	0
20.	LDK	346	0,47%	0
21.	PAA	177	0,24%	0
	ASHE	48.660	66.60%	35
23.	PS	19.793	27,09%	16
27.	PPAK	190	0,26%	0
28.	PASH	290	0,40%	0
29.	PRRL	575	0,79%	0
30.	PSV91	359	0,49%	0
32.	FRD	1.887	2,58%	1
33.	PRDSH	624	0,85%	0
34.	PDIU	5.874	8,04%	5

35.	PEISH	274	0,38%	0
36.	AMIE	75	0,10%	0
37.	ADS	452	0,62%	0
38.	PGJ	821	1,12%	1
39.	ABDE	310	0,42%	0
40.	PDS	746	1,02%	1
41.	FRA	353	0,48%	0
44.	AAK	80	0,11%	0
45.	PSHA	769	1,05%	1
47.	LSI	13.162	18,02%	10
49.	PKSH	103	0,14%	0
50.	G99	28	0,04%	0
51.	PUK	310	0,42%	0
52.	PMDE	448	0,61%	0
53.	AD	364	0,50%	0
54.	LDSH	136	0,19%	0
56.	PPSH	97	0,13%	0
57.	PSM	75	0,10%	0
58.	PDK	301	0,41%	0
68.	ILIRJAN SADIKU	958	1,31%	0

Votuar **74.825** | **47,21%*** Pjesëmarrja



Votat për subjektet në Këshillin e Bashkisë Cerrik



Votuar 16.133 | 46,08% Pjesëmarrja

	Subjekti	Vota	Përqindje	Mandate
3.	PSD	59	0,38%	0
	APPD	4.996	31.98%	7
7.	PDM-E RE	248	1,59%	0
8.	LZHK	311	1,99%	0
12.	PLL	337	2,16%	1
13.	PR	923	5,91%	1
15.	PD	2.339	14,97%	4
16.	PBK	232	1,48%	0
17.	KONS	5	0,03%	0
18.	BLD	90	0,58%	0
21.	PAA	511	3,27%	1
	ASHE	10.568	67.64%	14
23.	PS	3.708	23,73%	5
28.	PASH	370	2,37%	0
29.	PRRL	61	0,39%	0
30.	PSV91	418	2,68%	1
34.	PDIU	1.062	6,80%	1
37.	ADS	117	0,75%	0
40.	PDS	154	0,99%	0
42.	PKSH-8NENTORI	130	0,83%	0
44.	AAK	425	2,72%	1
45.	PSHA	68	0,44%	0
47.	LSI	2.794	17,88%	4

48.	PDRE	189	1,21%	0
49.	PKSH	46	0,29%	0
50.	G99	428	2,74%	1
51.	PUK	86	0,55%	0
57.	PSM	135	0,86%	0
58.	PDK	377	2,41%	1

Votat për subjektet në Këshillin e Bashkisë Belsh

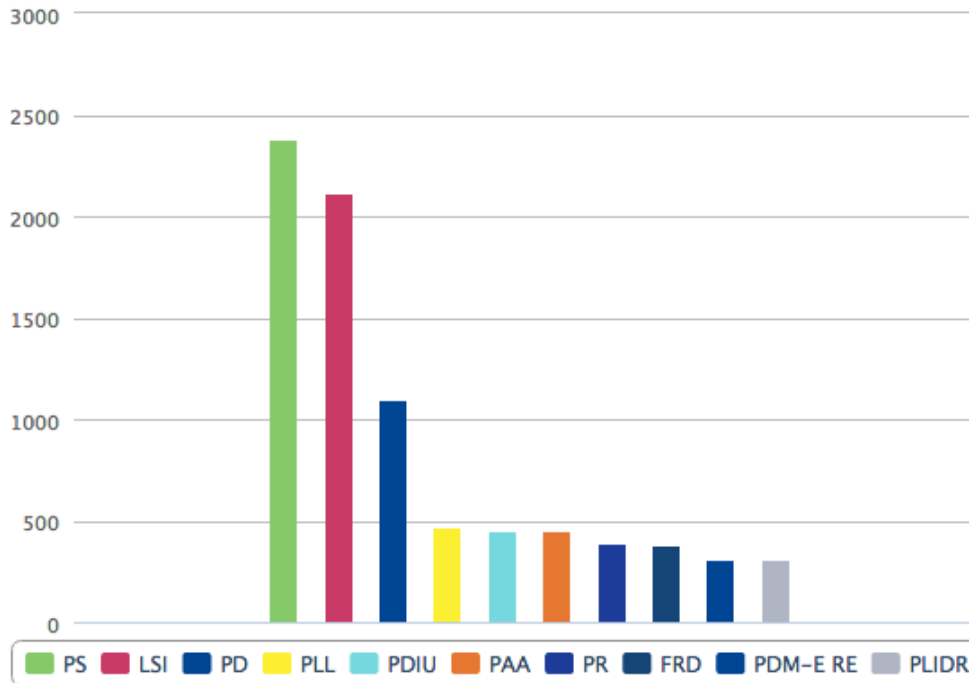


Votuar 11.719 | 48,59% Pjesëmarrja

	Subjekti	Vota	Përqindje	Mandate
3.	PSD	160	1,41%	0
	APPD	3.998	35.35%	8
7.	PDM-E RE	309	2,73%	1
8.	LZHK	222	1,96%	0
10.	PBKD	269	2,38%	1
11.	PPKDSH	184	1,63%	0
12.	PLL	467	4,13%	1
13.	PR	393	3,48%	1
14.	POSH	16	0,14%	0
15.	PD	1.096	9,69%	2
16.	PBK	11	0,10%	0
17.	KONS	256	2,26%	1
18.	BLD	145	1,28%	0
19.	PBD	182	1,61%	0
21.	PAA	448	3,96%	1
	ASHE	6.882	60.85%	13
23.	PS	2.381	21,05%	5
32.	FRD	380	3,36%	1
34.	PDIU	454	4,01%	1
36.	AMIE	113	1,00%	0
37.	ADS	89	0,79%	0
38.	PGJ	5	0,04%	0
40.	PDS	98	0,87%	0
41.	FRA	179	1,58%	0
43.	PLIDR	309	2,73%	1

44.	AAK	136	1,20%	0
47.	LSI	2.117	18,72%	4
48.	PDRE	24	0,21%	0
49.	PKSH	308	2,72%	1
56.	PPSH	71	0,63%	0
58.	PDK	218	1,93%	0
61.	AP	269	2,38%	0

Votuar **11.719** | **48,59%*** Pjesëmarrja



Votat për subjektet në Këshillin e Bashkisë Librazhd

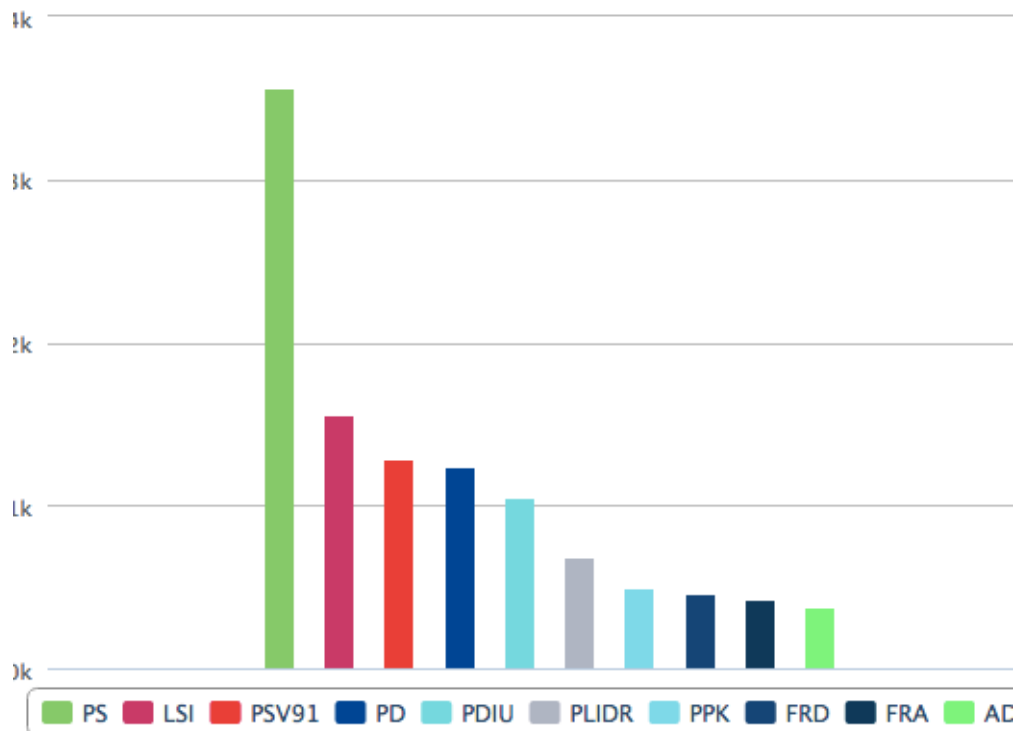


Votuar 16.654 | 51,55% Pjesëmarrja

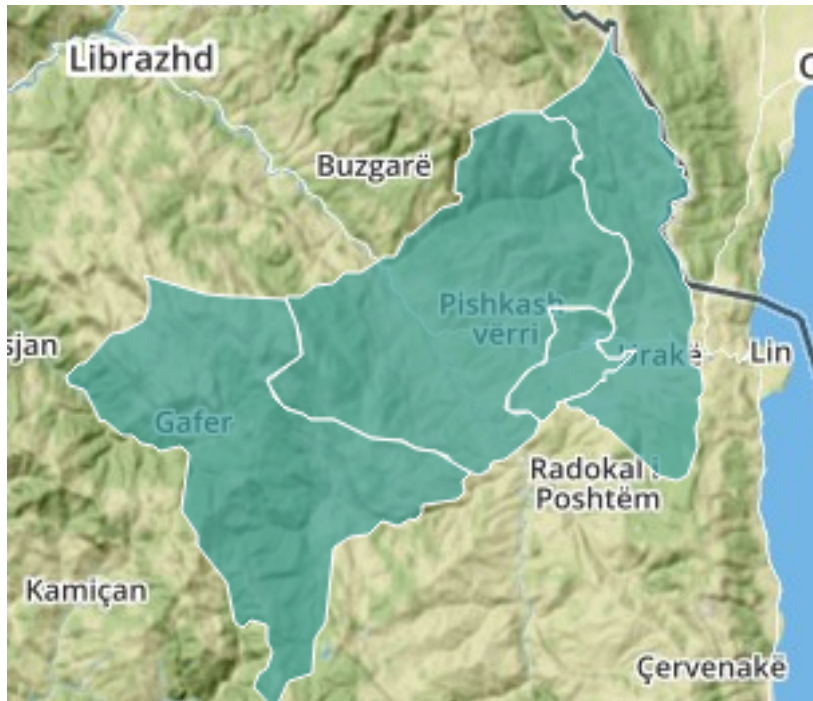
	Subjekti	Vota	Përqindje	Mandate
3.	PSD	222	1,39%	0
6.	PBDNJ	50	0,31%	0
	APPD	3.091	19.36%	4
7.	PDM-E RE	273	1,71%	0
8.	LZHK	144	0,90%	0
10.	PBKD	57	0,36%	0
12.	PLL	53	0,33%	0
13.	PR	233	1,46%	0
14.	POSH	123	0,77%	0
15.	PD	1.237	7,75%	2
16.	PBK	209	1,31%	0
17.	KONS	37	0,23%	0
18.	BLD	339	2,12%	1
19.	PBD	281	1,76%	1
20.	LDK	105	0,66%	0
	ASHE	12.470	78.12%	17
22.	PLDN	218	1,37%	0
23.	PS	3.559	22,30%	5
25.	PPK	494	3,09%	1
26.	ADK	152	0,95%	0
27.	PPAK	354	2,22%	1
28.	PASH	36	0,23%	0
29.	PRRL	61	0,38%	0

30.	PSV91	1.289	8,08%	2
31.	PSP	138	0,86%	0
32.	FRD	455	2,85%	1
33.	PRDSH	172	1,08%	0
34.	PDIU	1.047	6,56%	2
37.	ADS	199	1,25%	0
38.	PGJ	218	1,37%	0
39.	ABDE	16	0,10%	0
40.	PDS	237	1,48%	0
41.	FRA	430	2,69%	1
43.	PLIDR	689	4,32%	1
44.	AAK	70	0,44%	0
47.	LSI	1.560	9,77%	2
48.	PDRE	155	0,97%	0
49.	PKSH	100	0,63%	0
50.	G99	16	0,10%	0
52.	PMDE	26	0,16%	0
53.	AD	376	2,36%	1
54.	LDSH	57	0,36%	0
55.	PDM	111	0,70%	0
57.	PSM	130	0,81%	0
58.	PDK	105	0,66%	0
61.	AP	129	0,81%	0

Votuar **16.654** | **51,55%*** Pjesëmarrja



Votat për subjektet në Këshillin e Bashkisë Prrenjas

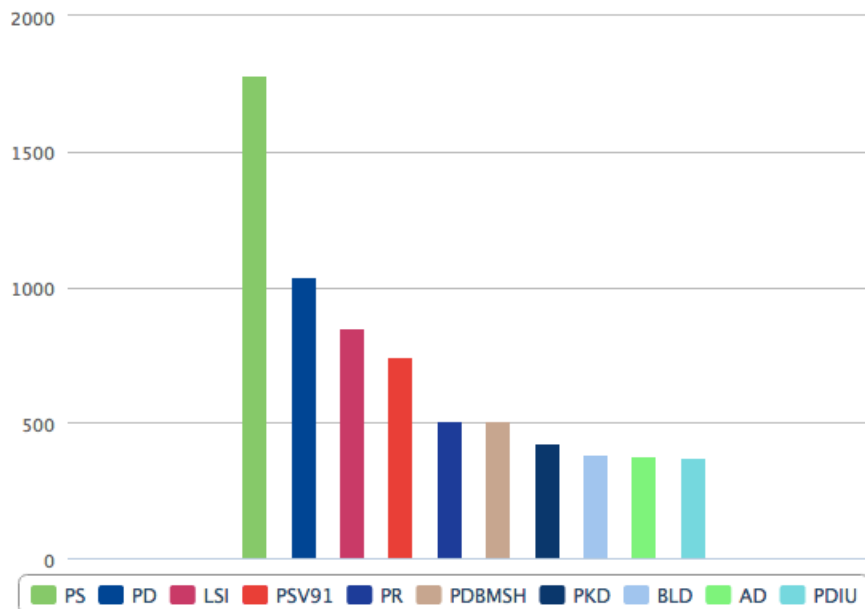


Votuar 13.798 | 57,08% Pjesëmarrja

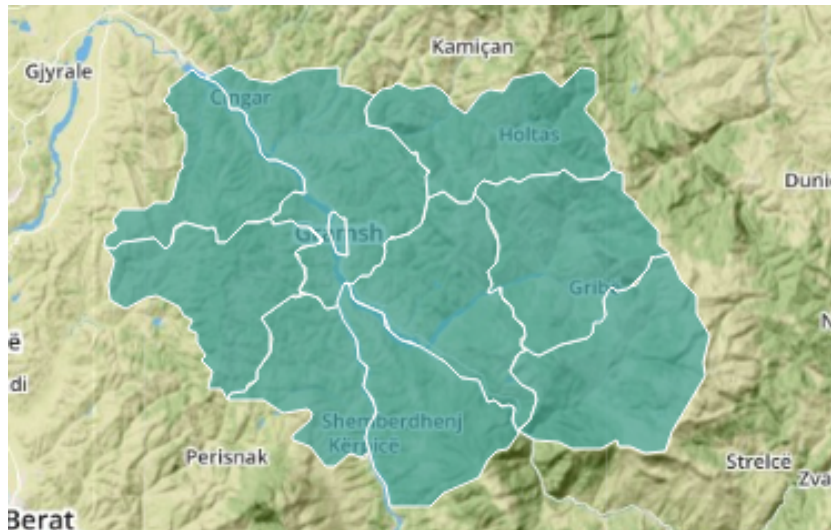
	Subjekti	Vota	Përqindje	Mandate
1.	PKD	422	3,25%	0
3.	PSD	103	0,79%	0
6.	PBDNJ	26	0,20%	0
	APPD	3.705	28.57%	6
7.	PDM-E RE	76	0,59%	0
8.	LZHK	252	1,94%	1
9.	MDL	29	0,22%	0
10.	PBKD	208	1,60%	0
11.	PPKDSH	234	1,80%	0
12.	PLL	294	2,27%	1
13.	PR	510	3,93%	1
15.	PD	1.039	8,01%	2
16.	PBK	102	0,79%	0
17.	KONS	187	1,44%	0
18.	BLD	384	2,96%	1
19.	PBD	200	1,54%	0
20.	LDK	190	1,46%	0
	ASHE	8.714	67.19%	15
22.	PLDN	139	1,07%	0
23.	PS	1.779	13,72%	4
24.	PDBMSH	509	3,92%	1

25.	PPK	217	1,67%	0
26.	ADK	143	1,10%	0
28.	PASH	86	0,66%	0
29.	PRRL	209	1,61%	0
30.	PSV91	744	5,74%	2
31.	PSP	101	0,78%	0
32.	FRD	327	2,52%	1
33.	PRDSH	58	0,45%	0
34.	PDIU	371	2,86%	1
36.	AMIE	14	0,11%	0
37.	ADS	254	1,96%	1
38.	PGJ	123	0,95%	0
39.	ABDE	151	1,16%	0
40.	PDS	131	1,01%	0
41.	FRA	211	1,63%	0
43.	PLIDR	287	2,21%	1
44.	AAK	186	1,43%	0
45.	PSHA	172	1,33%	0
47.	LSI	851	6,56%	2
48.	PDRE	90	0,69%	0
49.	PKSH	58	0,45%	0
50.	G99	232	1,79%	1
51.	PUK	135	1,04%	0
52.	PMDE	75	0,58%	0
53.	AD	380	2,93%	1
54.	LDSH	146	1,13%	0
55.	PDM	162	1,25%	0
56.	PPSH	51	0,39%	0
57.	PSM	109	0,84%	0
58.	PDK	213	1,64%	0

Votuar **13.798** | **57,08%*** Pjesëmarrja



Votat për subjektet në Këshillin e Bashkisë Gramsh

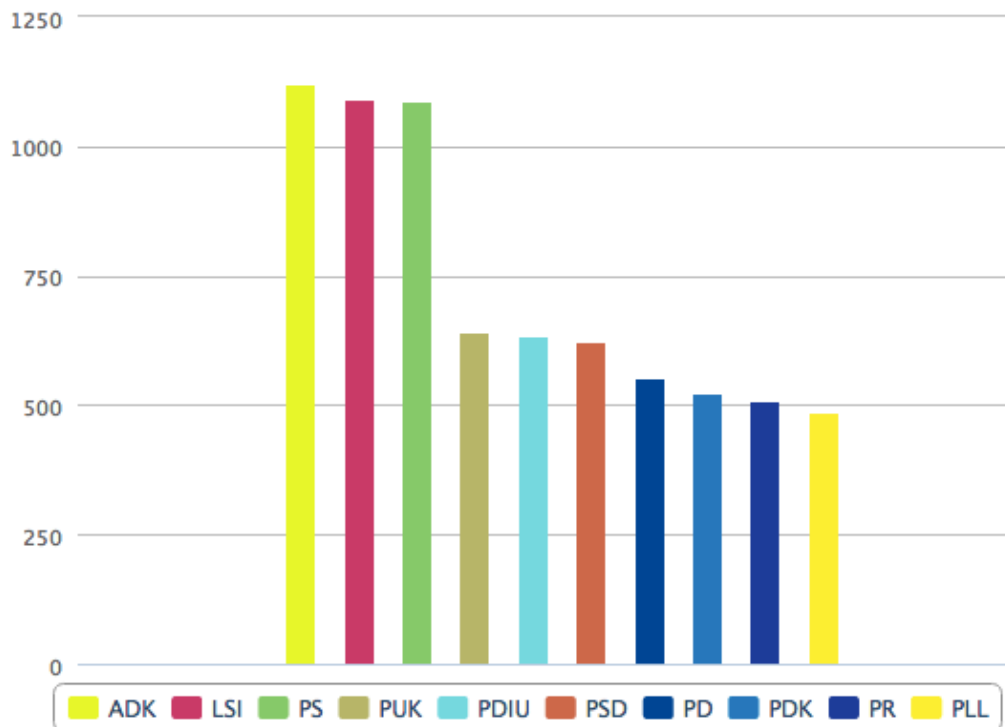


Votuar 15.052 | 55,74% Pjesëmarrja

	Subjekti	Vota	Përqindje	Mandate
3.	PSD	625	4,29%	0
6.	PBDNJ	225	1,55%	0
	APPD	3.633	24.96%	5
7.	PDM-E RE	43	0,30%	0
8.	LZHK	256	1,76%	0
10.	PBKD	163	1,12%	0
11.	PPKDSH	140	0,96%	0
12.	PLL	487	3,35%	1
13.	PR	508	3,49%	1
14.	POSH	129	0,89%	0
15.	PD	552	3,79%	1
16.	PBK	258	1,77%	0
17.	KONS	37	0,25%	0
18.	BLD	267	1,83%	1
19.	PBD	409	2,81%	1
20.	LDK	235	1,61%	0
21.	PAA	149	1,02%	0
	ASHE	10.016	68.82%	16
22.	PLDN	114	0,78%	0
23.	PS	1.089	7,48%	2
25.	PPK	337	2,32%	1
26.	ADK	1.120	7,70%	2
27.	PPAK	215	1,48%	0
28.	PASH	163	1,12%	0
29.	PRRL	55	0,38%	0
30.	PSV91	383	2,63%	1

31.	PSP	444	3,05%	1
32.	FRD	307	2,11%	1
34.	PDIU	635	4,36%	1
37.	ADS	97	0,67%	0
38.	PGJ	198	1,36%	0
40.	PDS	113	0,78%	0
41.	FRA	101	0,69%	0
42.	PKSH-8NENTORI	22	0,15%	0
43.	PLIDR	94	0,65%	0
44.	AAK	410	2,82%	1
47.	LSI	1.092	7,50%	2
48.	PDRE	216	1,48%	0
49.	PKSH	38	0,26%	0
50.	G99	178	1,22%	0
51.	PUK	641	4,40%	1
52.	PMDE	481	3,30%	1
53.	AD	123	0,85%	0
54.	LDSH	162	1,11%	0
56.	PPSH	235	1,61%	0
57.	PSM	429	2,95%	1
58.	PDK	524	3,60%	1
60.	FM	55	0,38%	0

Votuar **15.052** | **55,74%*** Pjesëmarrja



Votat për subjektet në Këshillin e Bashkisë Peqin



Votuar 13.848 | 48,20% Pjesëmarrja

	Subjekti	Vota	Përqindje	Mandate
3.	PSD	779	5,64%	1
	APPD	3.336	24.17%	5
8.	LZHK	44	0,32%	0
10.	PBKD	301	2,18%	1
12.	PLL	258	1,87%	0
13.	PR	82	0,59%	0
15.	PD	1.972	14,28%	3
17.	KONS	37	0,27%	0
18.	BLD	44	0,32%	0
20.	LDK	212	1,54%	0
21.	PAA	386	2,80%	1
	ASHE	9.690	70.19%	15
23.	PS	1.264	9,16%	2
30.	PSV91	896	6,49%	1
32.	FRD	136	0,99%	0
34.	PDIU	3.013	21,83%	5
37.	ADS	12	0,09%	0
38.	PGJ	524	3,80%	1
40.	PDS	1.341	9,71%	2
44.	AAK	75	0,54%	0
47.	LSI	2.135	15,47%	4
48.	PDRE	229	1,66%	0
53.	AD	44	0,32%	0
58.	PDK	21	0,15%	0

Votuar **13.848** | **48,20%*** Pjesëmarrja

