

## Votat për subjektet në Këshillin e Bashkisë Lezhë

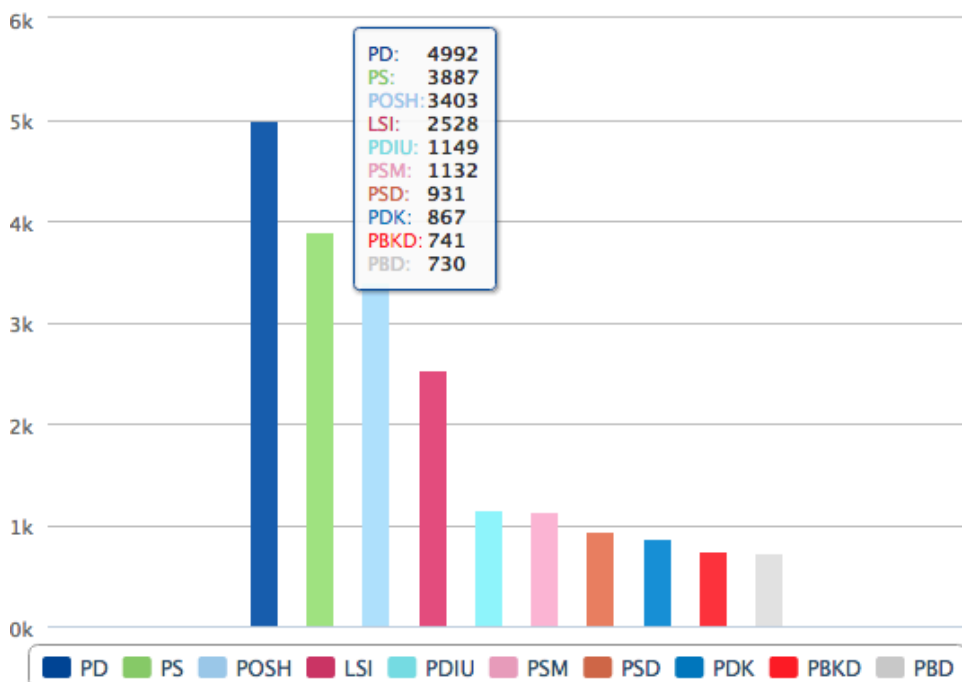


Votuar 32.935 | 48,80% Pjesëmarrja

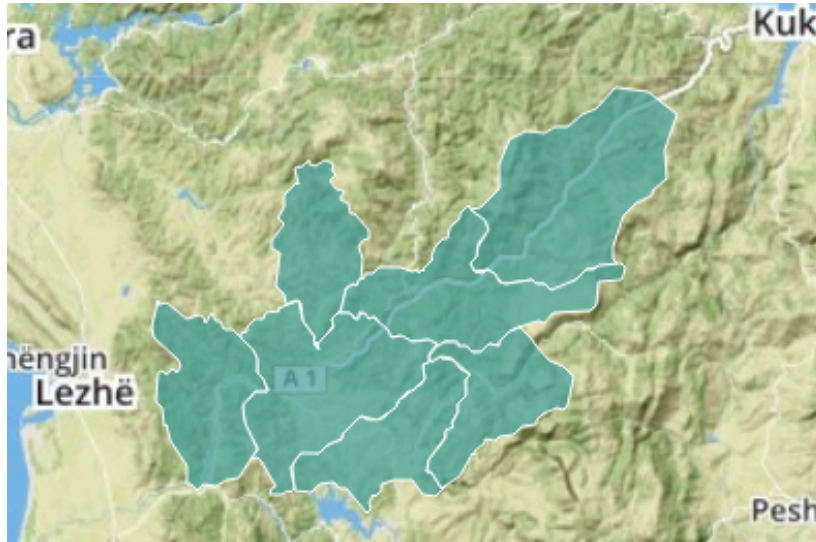
	Subjekti	Vota	Përqindje	Mandate
3.	PSD	931	2,91%	0
6.	PBDNJ	447	1,40%	0
	<b>APPD</b>	<b>13.637</b>	<b>42.68%</b>	<b>19</b>
7.	PDM-E RE	250	0,78%	0
8.	LZHK	517	1,62%	1
9.	MDL	271	0,85%	0
10.	PBKD	741	2,32%	1
11.	PPKDSH	29	0,09%	0
12.	PLL	148	0,46%	0
13.	PR	635	1,99%	1
14.	POSH	3.403	10,65%	5
15.	PD	4.992	15,62%	7
16.	PBK	373	1,17%	1
17.	KONS	411	1,29%	1
18.	BLD	545	1,71%	1
19.	PBD	730	2,28%	1
20.	LDK	298	0,93%	0
21.	PAA	294	0,92%	0
	<b>ASHE</b>	<b>16.497</b>	<b>51.63%</b>	<b>22</b>
22.	PLDN	363	1,14%	1
23.	PS	3.887	12,16%	6
26.	ADK	335	1,05%	0
27.	PPAK	432	1,35%	1
28.	PASH	269	0,84%	0
29.	PRRL	447	1,40%	1
30.	PSV91	350	1,10%	0

31.	PSP	369	1,15%	1
32.	FRD	383	1,20%	1
33.	PRDSH	206	0,64%	0
34.	PDIU	1.149	3,60%	2
35.	PEISH	63	0,20%	0
37.	ADS	105	0,33%	0
38.	PGJ	264	0,83%	0
40.	PDS	249	0,78%	0
41.	FRA	188	0,59%	0
42.	PKSH-8NENTORI	345	1,08%	0
44.	AAK	43	0,13%	0
45.	PSHA	341	1,07%	0
47.	LSI	2.528	7,91%	4
48.	PDRE	257	0,80%	0
49.	PKSH	145	0,45%	0
50.	G99	442	1,38%	1
51.	PUK	378	1,18%	1
52.	PMDE	177	0,55%	0
53.	AD	336	1,05%	0
54.	LDSH	161	0,50%	0
55.	PDM	246	0,77%	0
56.	PPSH	40	0,13%	0
57.	PSM	1.132	3,54%	2
58.	PDK	867	2,71%	1
66.	GJERGJ NDREKA	441	1,38%	0

Votuar **32.935** | **48,80%\*** Pjesëmarrja



## Votat për subjektet në Këshillin e Bashkisë Mirditë

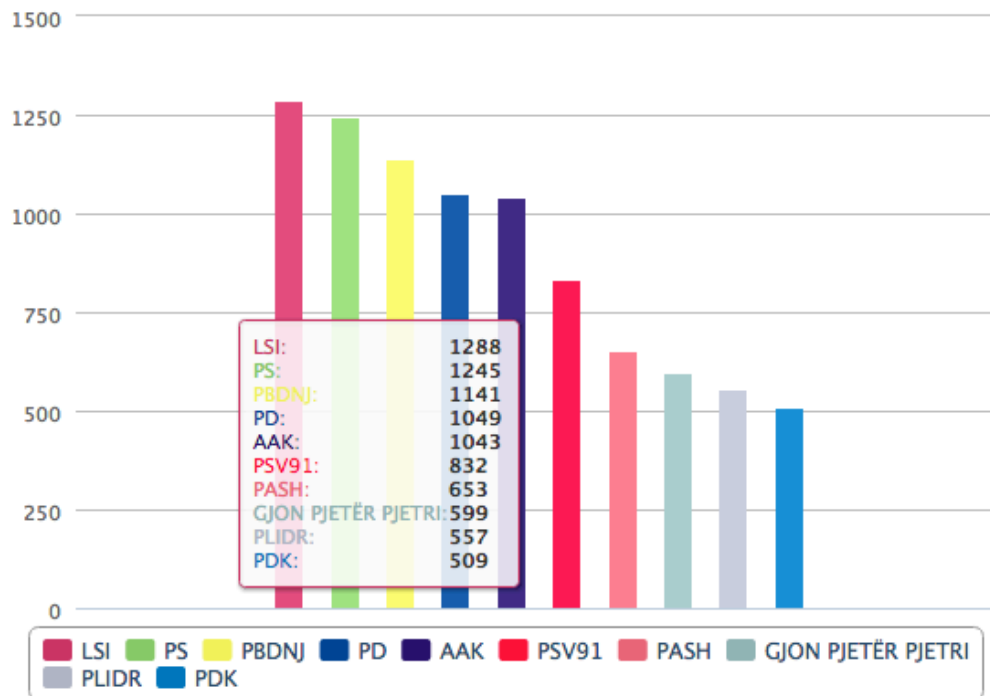


Votuar 15.369 | 54,58% Pjesëmarrja

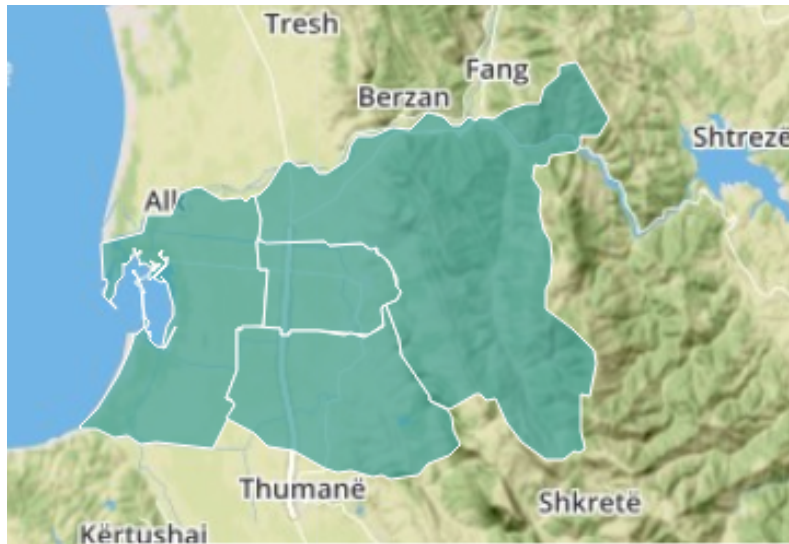
	Subjekti	Vota	Përqindje	Mandate
1.	PKD	371	2,47%	0
3.	PSD	86	0,57%	0
6.	PBDNJ	1.141	7,59%	1
	<b>APPD</b>	<b>2.940</b>	<b>19.56%</b>	<b>4</b>
7.	PDM-E RE	169	1,12%	0
8.	LZHK	318	2,12%	1
10.	PBKD	91	0,61%	0
12.	PLL	225	1,50%	0
13.	PR	278	1,85%	0
14.	POSH	109	0,73%	0
15.	PD	1.049	6,98%	2
16.	PBK	27	0,18%	0
18.	BLD	319	2,12%	1
19.	PBD	138	0,92%	0
21.	PAA	217	1,44%	0
	<b>ASHE</b>	<b>9.228</b>	<b>61.41%</b>	<b>16</b>
22.	PLDN	167	1,11%	0
23.	PS	1.245	8,29%	2
26.	ADK	161	1,07%	0
28.	PASH	653	4,35%	1
30.	PSV91	832	5,54%	2
32.	FRD	439	2,92%	1
34.	PDIU	70	0,47%	0
37.	ADS	204	1,36%	0
38.	PGJ	413	2,75%	1
40.	PDS	66	0,44%	0

42.	PKSH-8NENTORI	221	1,47%	0
43.	PLIDR	557	3,71%	1
44.	AAK	1.043	6,94%	2
47.	LSI	1.288	8,57%	2
49.	PKSH	14	0,09%	0
51.	PUK	306	2,04%	1
52.	PMDE	227	1,51%	0
53.	AD	191	1,27%	0
54.	LDSH	297	1,98%	1
55.	PDM	86	0,57%	0
56.	PPSH	60	0,40%	0
57.	PSM	179	1,19%	0
58.	PDK	509	3,39%	1
63.	LUAN FUPI	414	2,76%	0
64.	GJON PJETRI	599	3,99%	1
72.	MADALENA NIKOLLI248	1,65%	0	

Votuar **15.369** | **54,58%\*** Pjesëmarrja



## Votat për subjektet në Këshillin e Bashkisë Kurbin



Votuar 14.287 | 26,17% Pjesëmarrja

	Subjekti	Vota	Përqindje	Mandat
3.	PSD	287	2,10%	0
6.	PBDNJ	171	1,25%	0
	<b>APPD</b>	<b>2.565</b>	<b>18.77%</b>	
7.	PDM-E RE	73	0,53%	0
8.	LZHK	52	0,38%	0
9.	MDL	56	0,41%	0
10.	PBKD	235	1,72%	1
11.	PPKDSH	22	0,16%	0
12.	PLL	44	0,32%	0
13.	PR	149	1,09%	0
14.	POSH	40	0,29%	0
15.	PD	866	6,34%	3
16.	PBK	97	0,71%	0
17.	KONS	14	0,10%	0
18.	BLD	629	4,60%	2
19.	PBD	88	0,64%	0
20.	LDK	114	0,83%	0
21.	PAA	86	0,63%	0
	<b>ASHE</b>	<b>10.641</b>	<b>77.88%</b>	
23.	PS	2.988	21,87%	7
25.	PPK	287	2,10%	1
26.	ADK	68	0,50%	0
27.	PPAK	210	1,54%	0
28.	PASH	7	0,05%	0
29.	PRRL	161	1,18%	0
30.	PSV91	63	0,46%	0

31.	PSP	212	1,55%	1
32.	FRD	519	3,80%	1
33.	PRDSH	16	0,12%	0
34.	PDIU	374	2,74%	1
37.	ADS	53	0,39%	0
38.	PGJ	85	0,62%	0
40.	PDS	334	2,44%	1
41.	FRA	283	2,07%	1
43.	PLIDR	257	1,88%	1
44.	AAK	169	1,24%	0
45.	PSHA	458	3,35%	1
47.	LSI	2.940	21,52%	7
48.	PDRE	34	0,25%	0
49.	PKSH	43	0,31%	0
51.	PUK	52	0,38%	0
53.	AD	350	2,56%	1
54.	LDSH	71	0,52%	0
55.	PDM	68	0,50%	0
56.	PPSH	251	1,84%	1
58.	PDK	288	2,11%	1

Votuar **14.287** | **26,17%\*** Pjesëmarrja

