

Votat për subjektet në Këshillin e Bashkisë Berat 2015

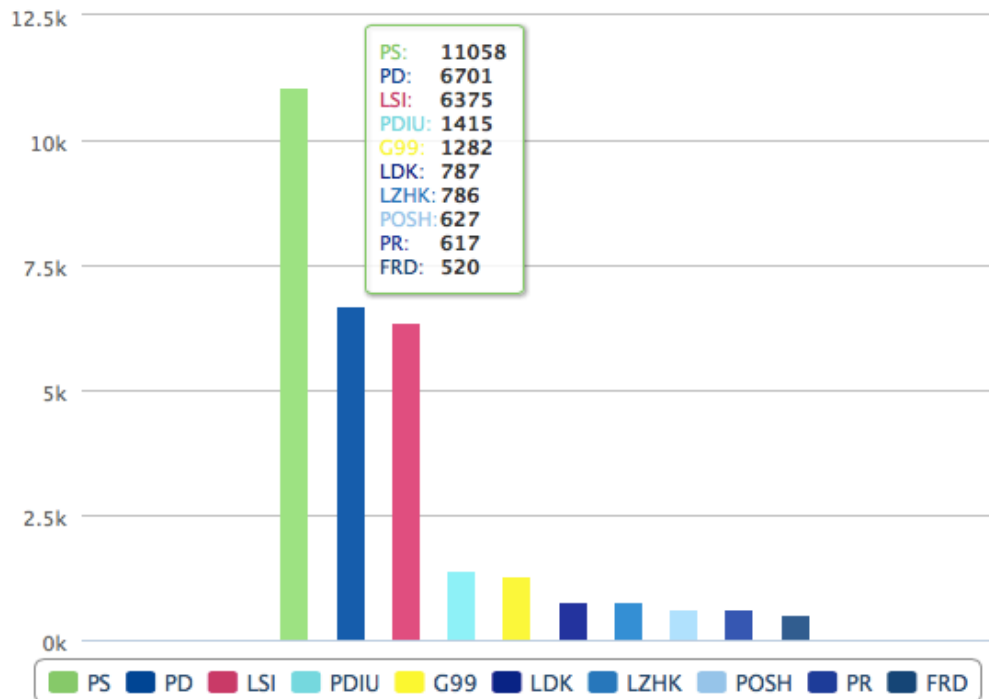


Votuar 36.190 | 46,61%* Pjesëmarrja

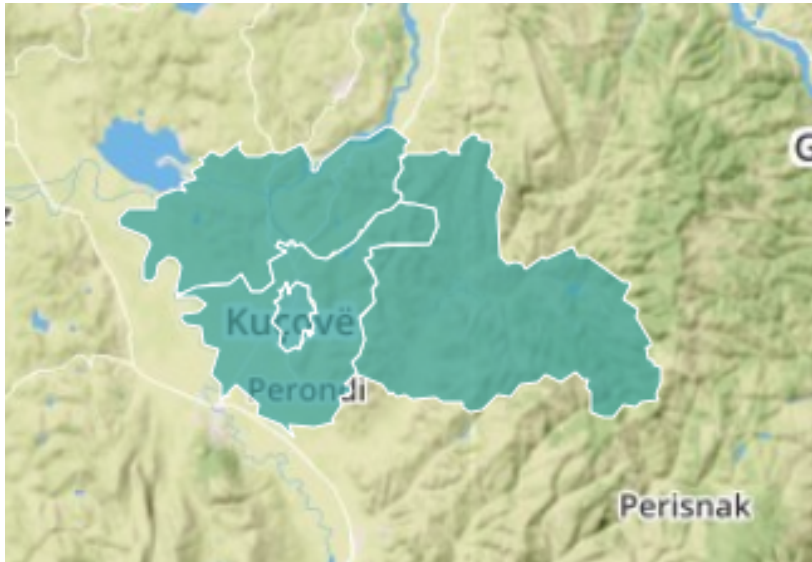
	Subjekti	Vota	Përqindje	Mandate
3.	PSD	497	1,42%	0
6.	PBDNJ	61	0,17%	0
	APPD	10.648	30.48%	10
8.	LZHK	786	2,25%	1
10.	PBKD	140	0,40%	0
12.	PLL	173	0,50%	0
13.	PR	617	1,77%	1
14.	POSH	627	1,79%	1
15.	PD	6.701	19,18%	6
16.	PBK	359	1,03%	0
18.	BLD	120	0,34%	0
20.	LDK	787	2,25%	1
21.	PAA	338	0,97%	0
	ASHE	23.382	66.93%	21
23.	PS	11.058	31,65%	11
26.	ADK	102	0,29%	0
29.	PRRL	278	0,80%	0
30.	PSV91	192	0,55%	0
31.	PSP	73	0,21%	0
32.	FRD	520	1,49%	1
33.	PRDSH	63	0,18%	0
34.	PDIU	1.415	4,05%	1
35.	PEISH	171	0,49%	0

36.	AMIE	24	0,07%	0
37.	ADS	153	0,44%	0
38.	PGJ	30	0,09%	0
39.	ABDE	73	0,21%	0
40.	PDS	373	1,07%	0
41.	FRA	57	0,16%	0
44.	AAK	159	0,46%	0
45.	PSHA	30	0,09%	0
46.	PÇSH	256	0,73%	0
47.	LSI	6.375	18,25%	7
49.	PKSH	60	0,17%	0
50.	G99	1.282	3,67%	1
51.	PUK	143	0,41%	0
53.	AD	51	0,15%	0
56.	PPSH	156	0,45%	0
58.	PDK	288	0,82%	0
60.	FM	346	0,99%	0

Votuar **36.190** | **46,61%*** Pjesëmarrja



Votat për subjektet në Këshillin e Bashkisë Kuçovë 2015

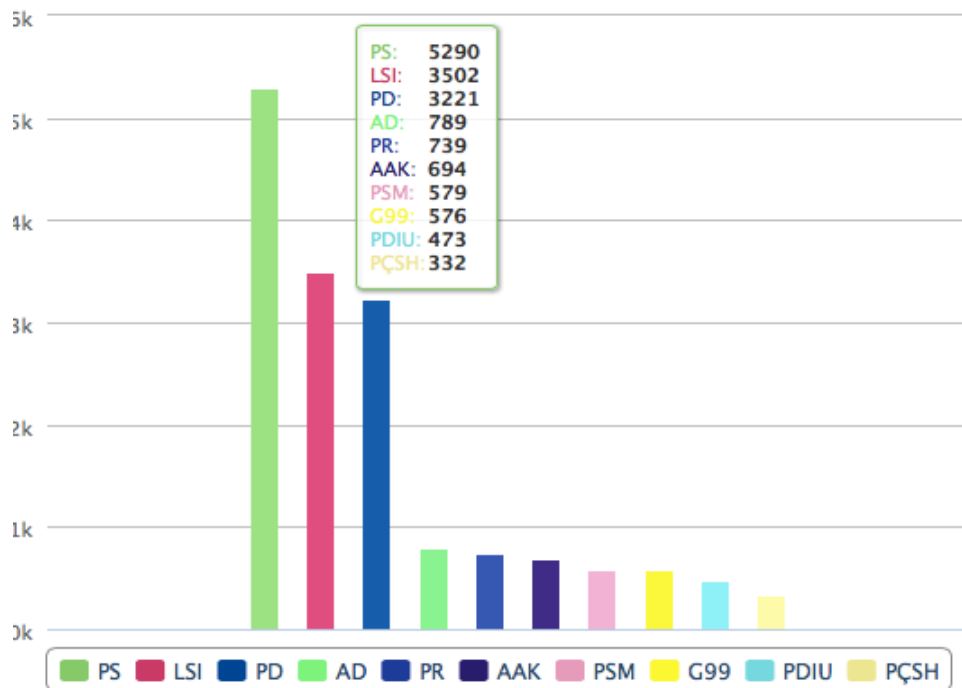


Votuar 19.480 | 44,92%* Pjesëmarrja

	Subjekti	Vota	Përqindje	Mandate
3.	PSD	181	0,96%	0
6.	PBDNJ	84	0,45%	0
	APPD	4.817	25.65%	8
8.	LZHK	138	0,73%	0
10.	PBKD	46	0,24%	0
12.	PLL	217	1,16%	0
13.	PR	739	3,94%	1
15.	PD	3.221	17,15%	6
16.	PBK	125	0,67%	0
18.	BLD	331	1,76%	1
	ASHE	13.665	72.77%	23
23.	PS	5.290	28,17%	10
30.	PSV91	235	1,25%	0
32.	FRD	195	1,04%	0
34.	PDIU	473	2,52%	1
36.	AMIE	20	0,11%	0
40.	PDS	245	1,30%	0
43.	PLIDR	280	1,49%	1
44.	AAK	694	3,70%	1
46.	PÇSH	332	1,77%	1
47.	LSI	3.502	18,65%	6
49.	PKSH	78	0,42%	0
50.	G99	576	3,07%	1
51.	PUK	61	0,32%	0

53.	AD	789	4,20%	1
56.	PPSH	71	0,38%	0
57.	PSM	579	3,08%	1
58.	PDK	245	1,30%	0
60.	FM	31	0,17%	0

Votuar **19.480** | **44,92%*** Pjesëmarrja



Votat për subjektet në Këshillin e Bashkisë Ura Vajgurore 2015

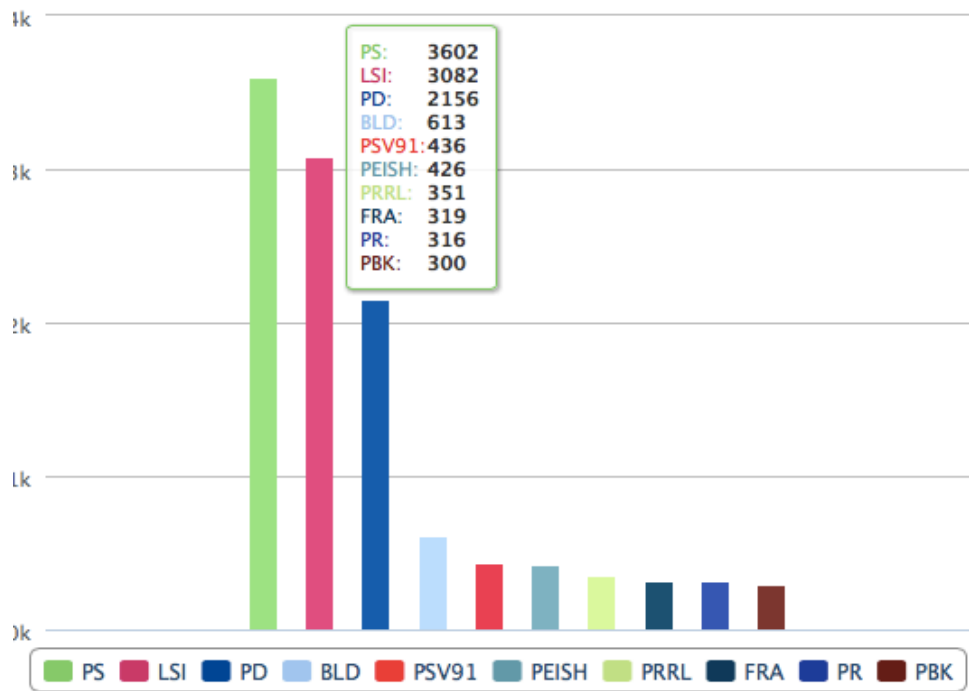


Votuar 16.042 | 54,44% Pjesëmarrja

	Subjekti	Vota	Përqindje	Mandate
3.	PSD	252	1,63%	0
	APPD	4.599	29.75%	6
8.	LZHK	266	1,72%	0
12.	PLL	69	0,45%	0
13.	PR	316	2,04%	1
14.	POSH	210	1,36%	0
15.	PD	2.156	13,95%	4
16.	PBK	300	1,94%	0
17.	KONS	186	1,20%	0
18.	BLD	613	3,97%	1
20.	LDK	271	1,75%	0
21.	PAA	212	1,37%	0
	ASHE	10.479	67.79%	15
23.	PS	3.602	23,30%	6
29.	PRRL	351	2,27%	1
30.	PSV91	436	2,82%	1
32.	FRD	96	0,62%	0
34.	PDIU	263	1,70%	0
35.	PEISH	426	2,76%	1
36.	AMIE	24	0,16%	0
37.	ADS	100	0,65%	0
38.	PGJ	44	0,28%	0
39.	ABDE	29	0,19%	0
40.	PDS	143	0,93%	0
41.	FRA	319	2,06%	1

44.	AAK	254	1,64%	0
45.	PSHA	25	0,16%	0
47.	LSI	3.082	19,94%	5
48.	PDRE	57	0,37%	0
50.	G99	112	0,72%	0
51.	PUK	274	1,77%	0
53.	AD	229	1,48%	0
54.	LDSH	187	1,21%	0
56.	PPSH	12	0,08%	0
57.	PSM	263	1,70%	0
58.	PDK	151	0,98%	0
60.	FM	127	0,82%	0

Votuar **16.042** | **54,44%*** Pjesëmarrja



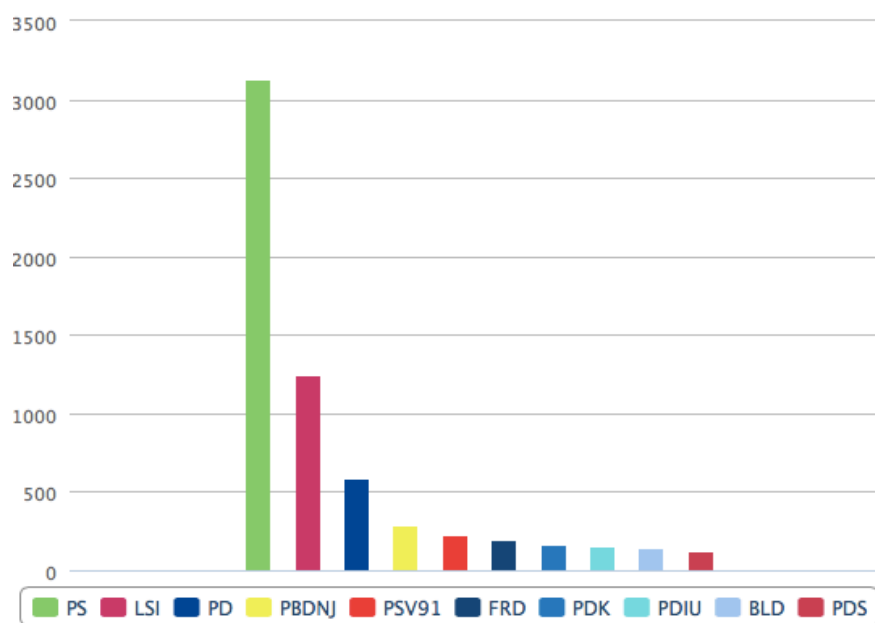
Votat për subjektet në Këshillin e Bashkisë Poliçan 2015



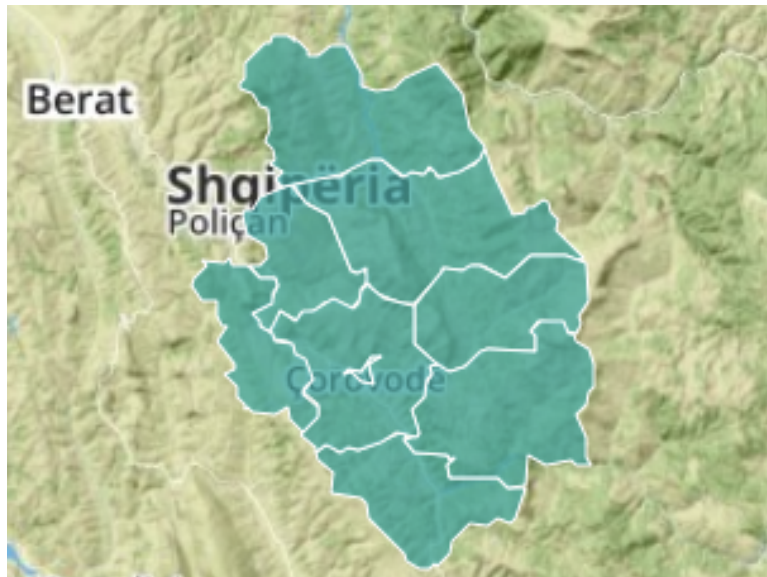
Votuar 7.001 | 50,28% Pjesëmarrja

	Subjekti	Vota	Përqindje	Mandate
3.	PSD	125	1,86%	0
6.	PBDNJ	292	4,35%	0
	APPD	841	12.54%	2
8.	LZHK	24	0,36%	0
13.	PR	60	0,89%	0
15.	PD	582	8,68%	2
16.	PBK	24	0,36%	0
18.	BLD	139	2,07%	0
20.	LDK	12	0,18%	0
	ASHE	5.448	81.24%	13
23.	PS	3.129	46,66%	8
30.	PSV91	228	3,40%	1
32.	FRD	200	2,98%	1
34.	PDIU	151	2,25%	0
37.	ADS	43	0,64%	0
40.	PDS	128	1,91%	0
44.	AAK	29	0,43%	0
47.	LSI	1.245	18,57%	3
53.	AD	111	1,66%	0
56.	PPSH	23	0,34%	0
58.	PDK	161	2,40%	0

Votuar **7.001** | **50,28%*** Pjesëmarrja



Votat për subjektet në Këshillin e Bashkisë Skrapar 2015



Votuar 8.099 | 55,47% Pjesëmarrja

	Subjekti	Vota	Përqindje	Mandate
	APPD	1.155	14.73%	2
8.	LZHK	12	0,15%	0
13.	PR	413	5,27%	1
15.	PD	707	9,01%	1
16.	PBK	23	0,29%	0
	ASHE	6.688	85.27%	13
23.	PS	1.519	19,37%	3
26.	ADK	176	2,24%	0
27.	PPAK	5	0,06%	0
30.	PSV91	23	0,29%	0
34.	PDIU	11	0,14%	0
38.	PGJ	144	1,84%	0
40.	PDS	207	2,64%	0
47.	LSI	4.486	57,20%	10
49.	PKSH	117	1,49%	0

Votuar **8.099** | **55,47%*** Pjesëmarrja

